

# Indirector Series™

## Ellipse Size A (11") Asymmetrical Floodlight Remote or Integral Ballast

### APPLICATIONS

- Ideal for Airports, Gymnasiums, Sports Complexes, Atriums, Churches, Schools, Malls, Libraries and Retail Spaces.

### CONSTRUCTION

- Extruded aluminum housing, door frame, splice chamber/ballast housing.
- Solid or perforated optical chamber.
- Die cast aluminum arms.
- Heavy duty die formed end plates.
- Tempered glass lens.
- No exposed fasteners.
- Matte White polyester powder coated finish standard.
- Optional designer finishes available. See page 391 for color samples.

### OPTICS

- Highly specular segmented/hammertone reflector.
- Choice of 25° or 45° (from horizontal) peak angle distribution.
- Up to 10% direct component on perforated housing.
- Horizontal or below lens positioning.
- 10° internal reflector adjustment.<sup>1</sup>
- Lockable adjustable arms.
- Lockable adjustable optical assembly.

### ELECTRICAL

- Remote ballasts standard: 120/277V HPF encapsulated Fcan or Electronic.<sup>7</sup>
- Integral ballasts optional: 120/277V Electronic.<sup>7</sup>
- G12 base socket.
- No exposed wiring.

### MOUNTING

- Wall or ceiling mounted.
- Quick mounting plate with built-in level.
- Integral splice chamber.

### WARRANTY/LISTINGS

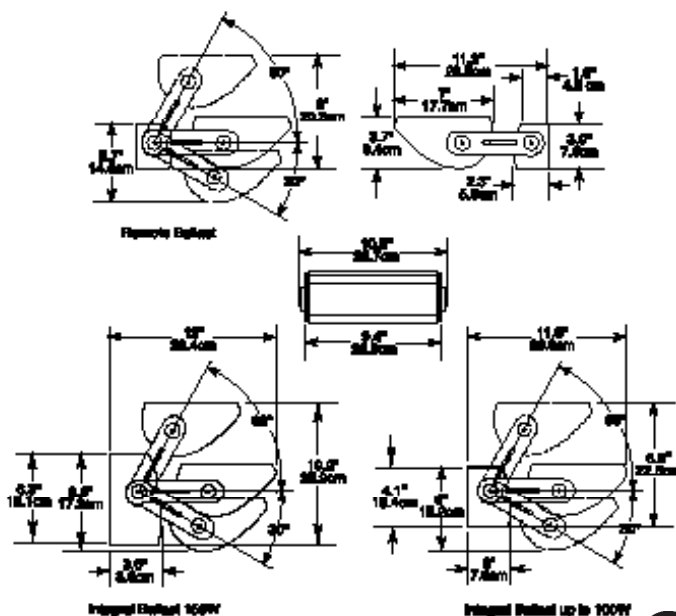
- UL 1598 damp location/optional wet location.<sup>6</sup>
- Published five year limited warranty.

OPTIONS & ACCESSORIES — SEE PAGES 28-29.

PHOTOMETRICS — CONSULT SPECIFICATION SHEETS.



35 to 150 Watt (MA) Metal Halide and (EMA) Electronic Metal Halide



### ORDERING GUIDE EXAMPLE: ELA72EMAWHM-6

EL	A	7	2	EMA	WHM		6
	A						
Style	Size	Wattage	Distribution	Source	Finish	Options	

EL=Ellipse	A=11"	3= 35(T6) 7= 70(T6) 10=100(T6) 15=150(T6)	2=25° Peak Angle <sup>5</sup>  4=45° Peak Angle <sup>5</sup>	MA <sup>2</sup> or EMA <sup>3,4</sup>	WHM=Matte White TM= Dark Titanium AL= Aluminum (Paint) NA=Natural Anodized (Paint) BKX=Black Sandtex	IB=Integral Ballast <sup>7</sup> WL=Wet Location <sup>6</sup> See page 28	1=120 4=277 6=120/277
------------	-------	--	--	---------------------------------------	--	---	-----------------------------

<sup>1</sup>Internal reflector not adjustable on perforated units.

<sup>2</sup>Remote ballast only. Voltage is 6(120/277).

<sup>3</sup>Voltage is 6(120/277) for 35-70W, 1(120) or 4(277) for 100 and 150W.

<sup>4</sup>Maximum ballast to lamp distance is 15'.

<sup>5</sup>Peak angles may vary. Consult photometry on specification sheets.

<sup>6</sup>Wet location limited to wall mounting, lens up orientation.

<sup>7</sup>EMA only. Voltage is 6(120/277) for 35-70W, 1(120) or 4(277) for 100 and 150W.



Product information is subject to change without notice.

