

Indirector Series™

Sharpe Size A (11") Asymmetrical Floodlight Remote or Integral Ballast

APPLICATIONS

- Ideal for Airports, Gymnasiums, Sports Complexes, Atriums, Churches, Schools, Malls, Libraries and Retail Spaces.

CONSTRUCTION

- Extruded aluminum housing, door frame, splice chamber/ballast housing.
- Solid, perforated or "Window" optical chamber.
- Die cast aluminum arms.
- Heavy duty die formed end plates.
- Tempered glass lens.
- No exposed fasteners.
- Matte White polyester powder coated finish standard.
- Optional designer finishes available. See inside back cover of ExcelLine catalog.

OPTICS

- Highly specular segmented/hammertone reflector.
- Choice of 25° or 45° (from horizontal) peak angle distribution.
- Up to 10% direct component on perforated and "Window" housings.
- Horizontal or below lens positioning.
- 10° internal reflector adjustment.¹
- Lockable adjustable arms.
- Lockable adjustable optical assembly.

ELECTRICAL

- Remote ballasts standard: 120/277V HPF encapsulated Fcan or Electronic.⁶
- Integral ballasts optional: 120/277V Electronic (35-70W), 120 or 277V Electronic (100 and 150W).
- G12 base socket.
- No exposed wiring.

MOUNTING

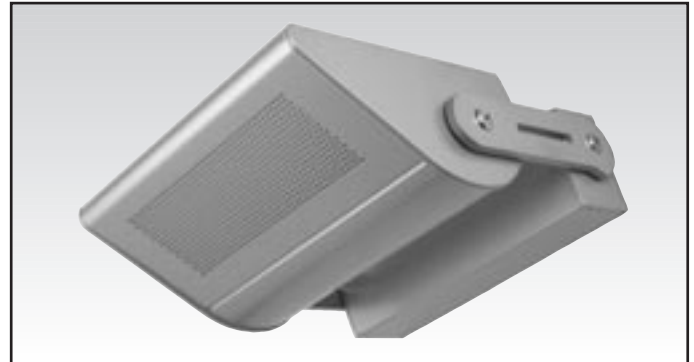
- Wall or ceiling mounted.
- Quick mounting plate with built-in level.
- Integral splice chamber.

WARRANTY/LISTINGS

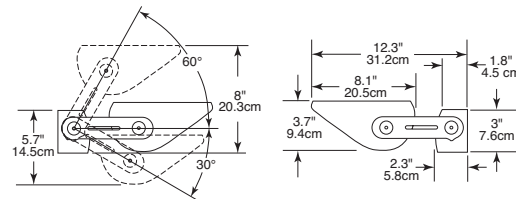
- UL 1598 damp location/optional wet location.⁷
- Published five year limited warranty.

OPTIONS & ACCESSORIES — SEE END OF THIS SECTION.

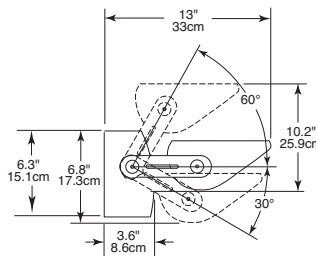
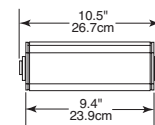
PHOTOMETRICS — SEE REVERSE SIDE.



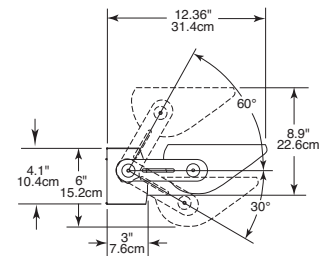
35 to 150 Watt (MA) Metal Halide and (EMA) Electronic Metal Halide



Remote Ballast



Integral Metal Halide Ballast 150W



Integral Metal Halide Ballast up to 100W



ORDERING GUIDE EXAMPLE: SHA32MAWHM-6

SH	A	3	2	MA	WHM	-	6
	A						
Style	Size	Wattage	Distribution	Source	Finish	Options	Voltage

SH= Sharpe	A=11"	3= 35(T6) 7= 70(T6) 10=100(T6) 15=150(T6)	2=25° Peak Angle ⁵ 4=45° Peak Angle ⁵	MA ² or EMA ^{3,4}	WHM=Matte White TM= Dark Titanium AL= Aluminum (Paint) NA=Natural Anodized (Paint) BKX=Black Sandtex	IB=Integral Ballast ⁶ WL=Wet Location ⁷ See options/acc's end of this section.	1=120 4=277 6=120/277
------------	-------	--	--	---------------------------------------	--	--	-----------------------------

¹Internal reflector not adjustable on perforated or "Window" units.

²Remote ballast only. Voltage is 6(120/277).

³Voltage is 6(120/277) for 35-70W and 1(120) or 4(277) for 100 and 150W.

⁴Maximum ballast to lamp distance is 15'.

⁵Peak angles may vary. Consult photometry on reverse side.

⁶EMA only. Voltage is 6(120/277) for 35-70W, 1(120) or 4(277) for 100 and 150W.

⁷Wet location limited to wall mounting, lens up orientation.

Product information is subject to change without notice.



Indirector Series™

Sharpe Size A (11") Asymmetrical Floodlight

APPLICATIONS

- Ideal for Airports, Gymnasiums, Sports Complexes, Atriums, Churches, Schools, Malls, Libraries and Retail Spaces.

CONSTRUCTION

- Extruded aluminum housing, door frame, splice chamber/ballast housing.
- Solid, perforated or "Window" optical chamber.
- Die cast aluminum arms.
- Heavy duty die formed end plates.
- Tempered glass lens.
- No exposed fasteners.
- Matte White polyester powder coated finish standard.
- Optional designer finishes available. See inside back cover of ExcelLine catalog.

OPTICS

- Highly specular segmented/hammertone reflector.
- Choice of 25° or 45° (from horizontal) peak angle distribution.
- Up to 10% direct component on perforated and "Window" housings.
- Horizontal or below lens positioning.
- Internal reflector adjustment.¹
- Lockable adjustable arm.
- Lockable adjustable optical assembly.

ELECTRICAL

- 120V only.
- Frosted lamps recommended.
- DC bayonet base.
- No exposed wiring.

MOUNTING

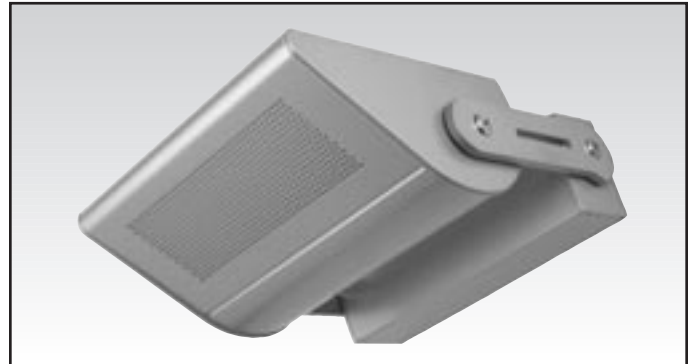
- Wall or ceiling mounted.
- Quick mounting plate with built-in level.
- Integral splice chamber.

WARRANTY/LISTINGS

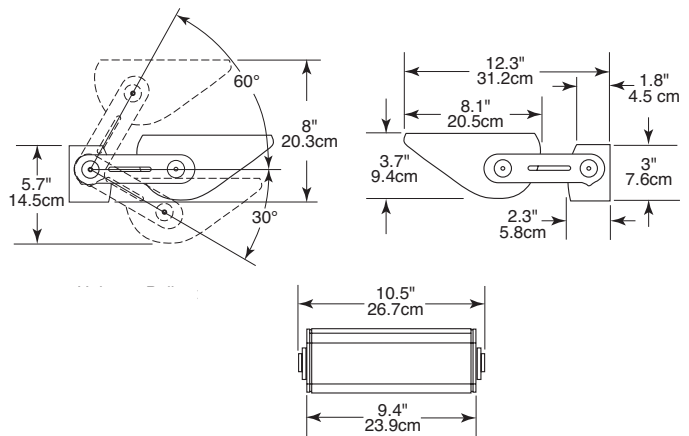
- UL 1598 damp location/optional wet location.³
- Published five year limited warranty.

OPTIONS & ACCESSORIES — SEE END OF THIS SECTION.

PHOTOMETRICS — SEE REVERSE SIDE.



100 to 250 Watt (HA) Halogen



ORDERING GUIDE EXAMPLE: SHA252HAWHM-1



SH	A	25	2	HA	WHM	-	1
	A	25		HA		-	1
Style	Size	Wattage	Distribution	Source	Finish	Options	Voltage

SH= Sharpe

A=11"

25=250(T4)

2=25°
Peak Angle²

HA⁴

WHM=Matte White
TM= Dark Titanium
AL= Aluminum
(Paint)
NA=Natural Anodized
(Paint)
BKX=Black Sandtex

WL=Wet Location³
See options/acc's
end of this section.

1=120

SP= Sharpe
Perforated¹

SW=Sharpe
Window¹

4=45°
Peak Angle²

Product information is subject to change without notice.

¹Internal reflector not adjustable on perforated or "Window" units.

²Peak angles may vary. Consult photometry on reverse side.

³Wet location limited to wall mounting, lens up orientation.

⁴Frosted lamps recommended.