

Indirector Series™

Ellipse Size B (14") Asymmetrical Floodlight

Remote or Integral Ballast

APPLICATIONS

- Ideal for Airports, Gymnasiums, Sports Complexes, Atriums, Churches, Schools, Malls, Libraries and Retail Spaces.

CONSTRUCTION

- Extruded aluminum housing, door frame, splice chamber/ballast housing.
- Solid or perforated optical chamber.
- Die cast aluminum arms.
- Heavy duty die formed end plates.
- Tempered glass lens.
- No exposed fasteners.
- Matte White polyester powder coated finish standard.
- Optional designer finishes available. See inside back cover of ExceLine catalog.

OPTICS

- Highly specular segmented/hammertone reflector.
- Choice of 25° or 45° (from horizontal) peak angle distribution.
- Up to 10% direct component on perforated housing.
- Horizontal or below lens positioning.
- Internal reflector adjustment.¹
- Lockable adjustable arms.
- Lockable adjustable optical assembly.

ELECTRICAL

- Remote ballasts standard: 120/277V HPF encapsulated Fcan or Electronic.⁶
- Integral ballasts optional: 120/277V HPF encapsulated Fcan or Electronic.⁶
- 4KV medium base socket.
- No exposed wiring.

MOUNTING

- Wall or ceiling mounted.
- Quick mounting plate with built-in level.
- Integral splice chamber.

WARRANTY/LISTINGS

- UL 1598 damp location/optional wet location.⁵
- Published five year limited warranty.

OPTIONS & ACCESSORIES — SEE END OF THIS SECTION.

PHOTOMETRICS — SEE REVERSE SIDE.

ORDERING GUIDE EXAMPLE: EPB174MAWHM-6

EP	B	17	4	MA	WHM		6
	B						
Style	Size	Wattage	Distribution	Source	Finish	Options	Voltage

EL=Ellipse	B=14"	5= 50(ED17) 7= 70(ED17) 10=100(ED17) 15=150(ED17) ² 17=175(ED17)	2=25° Peak Angle ⁴ 4=45° Peak Angle ⁴	MA MA or EMA ⁶ MA or EMA ⁶ MA ³ or EMA ⁸ MA	WHM=Matte White TM= Dark Titanium AL= Aluminum (Paint) NA=Natural Anodized (Paint) BKX=Black Sandtex	IB=Integral Ballast ⁷ WL=Wet Location ⁵ See options/acc's end of this section.	1=120 4=277 6=120/277
------------	-------	---	--	---	--	---	-----------------------------

Product information is subject to change without notice.

¹Internal reflector not adjustable on perforated units.

²Remote ballast only.

³Remote ballast only. Voltage is 6(120/277).

⁴Peak angles may vary. Consult photometry on reverse side.

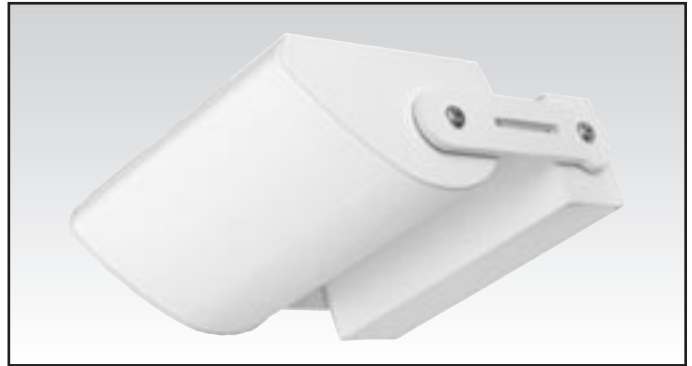
⁵Wet location limited to wall mounting, lens up orientation.

⁶Voltage is 6(120/277) for 70W and 1(120) or 4(277) for 150W.

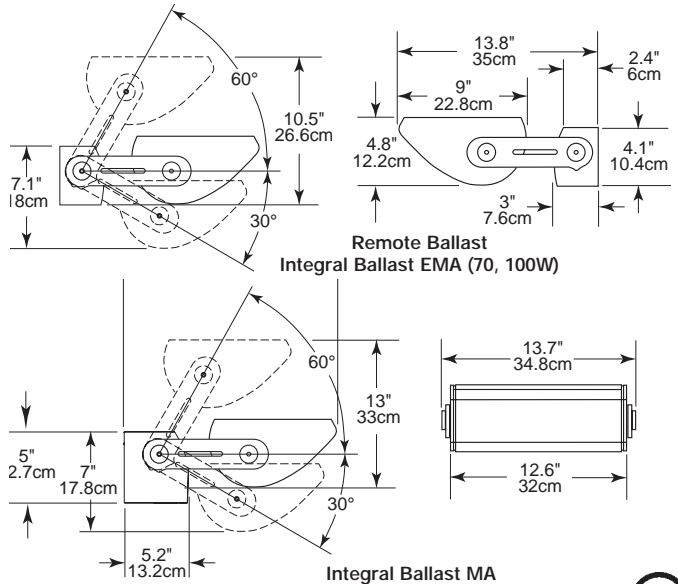
⁷EMA not available in 150W.

⁸Remote ballast only. Voltage is 1(120) or 4(277).

Consult factory for High Pressure Sodium.



50 to 175 Watt (MA) Metal Halide and (EMA) Electronic Metal Halide



Indirector Series™

Ellipse Size B (14") Asymmetrical Floodlight

Remote or Integral Ballast

APPLICATIONS

- Ideal for Airports, Churches, Schools, Libraries, Offices and Retail Spaces.

CONSTRUCTION

- Extruded aluminum housing, door frame, splice chamber/ballast housing.
- Solid or perforated optical chamber.
- Die cast aluminum arms.
- Heavy duty die formed end plates.
- Tempered glass lens.
- No exposed fasteners.
- Matte White polyester powder coated finish standard.
- Optional designer finishes available. See inside back cover of ExceLine catalog.

OPTICS

- Highly specular segmented/hammertone reflector.
- 45° (from horizontal) peak angle distribution.
- Up to 10% direct component on perforated housing.
- Horizontal or below lens positioning.
- Internal reflector adjustment.¹
- Lockable adjustable arms.
- Lockable adjustable optical assembly.

ELECTRICAL

- Remote ballasts standard: 120/277V HPF Electronic.
- Integral ballasts optional: 120/277V HPF Electronic.
- No exposed wiring.

MOUNTING

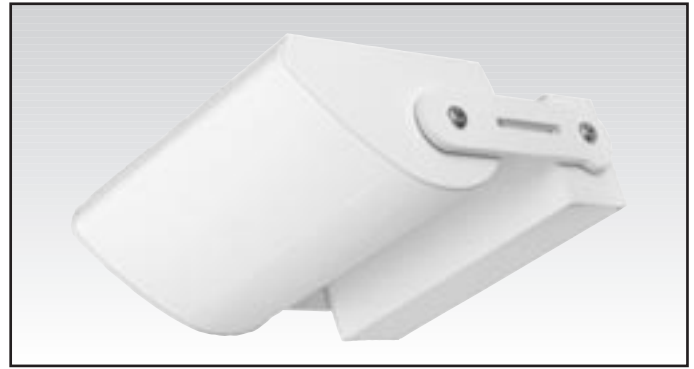
- Wall or ceiling mounted.
- Quick mounting plate with built-in level.
- Integral splice chamber.

WARRANTY/LISTINGS

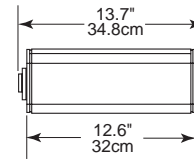
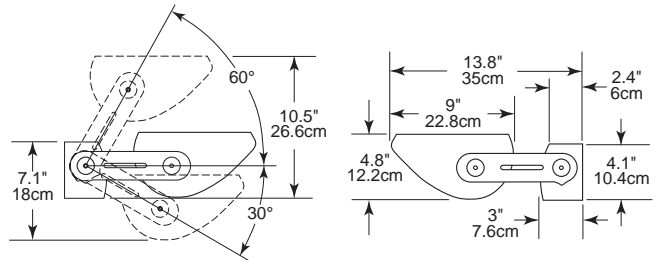
- UL 1598 damp location/optional wet location.⁴
- Published five year limited warranty.

OPTIONS & ACCESSORIES — SEE END OF THIS SECTION.

PHOTOMETRICS — SEE REVERSE SIDE.



1 x 26 to 57 Watt (HF) PLT Compact Fluorescent



ORDERING GUIDE EXAMPLE: EPB24HFWHM-6



EP	B	2	4	HF	WHM	-	6
	B		4	HF		-	6
Style	Size	Wattage	Distribution	Source	Finish	Options	Voltage

EL =Ellipse	B =14"	2 = 26(PLT)	4 =45°	HF ³	WHM =Matte White	IB =Integral Ballast	6 =120/277
EP =Ellipse Perforated ¹		3 = 32(PLT)	Peak Angle ²		TM = Dark Titanium	WL =Wet Location ⁴	
		4 = 42(PLT)			AL = Aluminum (Paint)	See options/acc's end of this section.	
		5 = 57(PLT)			NA =Natural Anodized (Paint)		
					BKX =Black Sandtex		

Product information is subject to change without notice.

¹Internal reflector not adjustable on perforated units.
²Peak angles may vary. Consult photometry on reverse side.
³Maximum ballast to lamp distance is 15".
⁴Wet location limited to wall mounting, lens up orientation.



Indirector Series™

Ellipse Size B (14") Asymmetrical Floodlight

APPLICATIONS

- Ideal for Airports, Gymnasiums, Sports Complexes, Atriums, Churches, Schools, Malls, Libraries and Retail Spaces.

CONSTRUCTION

- Extruded aluminum housing, door frame, splice chamber/ballast housing.
- Solid or perforated optical chamber.
- Die cast aluminum arms.
- Heavy duty die formed end plates.
- Tempered glass lens.
- No exposed fasteners.
- Matte White polyester powder coated finish standard.
- Optional designer finishes available. See inside back cover of ExceLine catalog.

OPTICS

- Highly specular segmented/hammertone reflector.
- Choice of 25° or 45° (from horizontal) peak angle distribution.
- Up to 10% direct component on perforated housing.
- Horizontal or below lens positioning.
- Lockable adjustable arms.
- Lockable adjustable optical assembly.

ELECTRICAL

- 120V only.
- Frosted lamps recommended
- R7 double ended socket.
- No exposed wiring.

MOUNTING

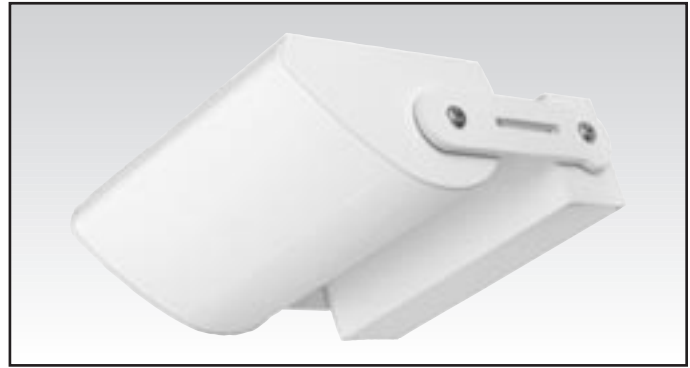
- Wall or ceiling mounted.
- Quick mounting plate with built-in level.
- Integral splice chamber.

WARRANTY/LISTINGS

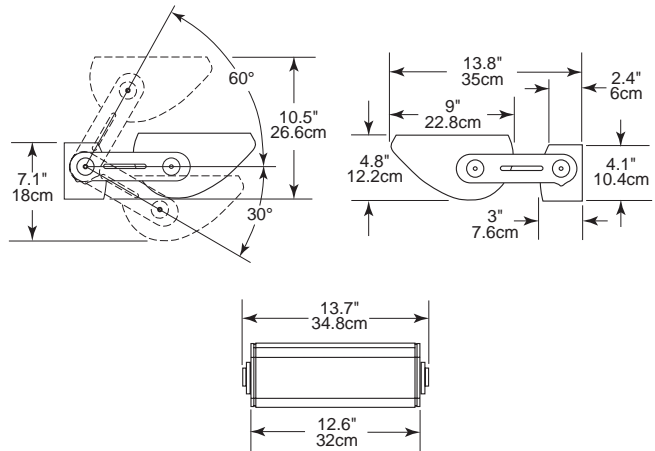
- UL 1598 damp location/optional wet location.³
- Published five year limited warranty.

OPTIONS & ACCESSORIES — SEE END OF THIS SECTION.

PHOTOMETRICS — SEE REVERSE SIDE.



300 to 500 Watt (HA) Halogen



ORDERING GUIDE EXAMPLE: EPB504HAWHM-1



EP	B	50	4	HA	WHM	-	1
	B	50		HA			1
Style	Size	Wattage	Distribution	Source	Finish	Options	Voltage

EL=Ellipse

B=14"

50=500 (T3)

2=25°
Peak Angle²

HA¹

WHM=Matte White

WL=Wet Location³

1=120

EP=Ellipse
Perforated

4=45°
Peak Angle²

TM= Dark Titanium

See options/acc's
end of this section.

AL= Aluminum
(Paint)

NA=Natural Anodized
(Paint)

BKX=Black Sandtex

Product information is subject to change without notice.

¹Frosted lamps recommended

²Peak angles may vary. Consult photometry on reverse side.

³Wet location limited to wall mounting, lens up orientation.

